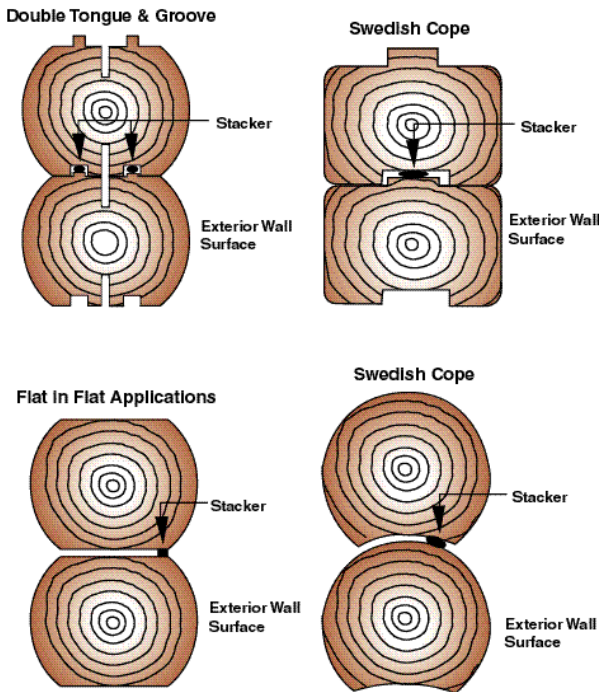


# STACKER

## Elastic Adhesive-Sealant for Logs

### Applying Log Keeper

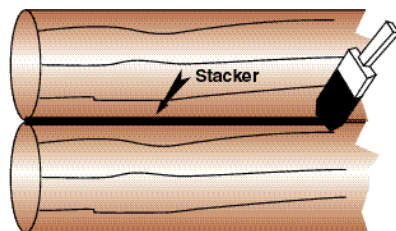
1. Read this Data Tec (STK 002) and the entire label before applying this product.
2. Apply a 1/4" to 3/8" bead of Stacker as directed in the diagrams below.
3. Stack the next log and repeat.



**Note:** When logs are stacked "flat on flat," the final bead size can be as small as 1/16". Because Stacker can absorb only 100% movement, anything beyond 1/8" expansion will most likely cause sealant failure. Therefore, we do not recommend Stacker for flat on flat applications unless there is little to no anticipated movement.

### When using Stacker as a Regular Exterior Sealant

1. Start with clean logs that have already been treated with a preservative and stain compatible with Stacker. (Contact Sashco for compatibility information before applying. Some stains must be applied after using Stacker.)
2. Install a "bond-breaker," i.e., backer rod or mylar tape.
3. Apply Stacker with a standard cartridge gun, bulk loading gun or Sashco's patented Snorkler™ Pump.
4. Tool Stacker



### Application Tips

#### Surface Preparation

Surfaces should be clean and clear of uncured oils, dirt, frost, and other loose materials. If sealers or wood preservatives are applied prior to using Stacker, be sure the logs are completely dry before applying. The log surfaces should be between 40°F and 120°F.

#### Methods of Application

Cut spout at an angle to desired size. Puncture inner seal. Use a caulk gun to apply.

#### Joint Design (if used as an exterior sealant)

The depth of Stacker should be between 1/4" and 1/2". Joint width should be no greater than 2". Ensure 2-point adhesion by using a bond-breaker (i.e., backer rod or mylar tape). (Backer rod with a round profile provides the best shape for accommodating the greatest movement.)

#### Application Hints

Allow Stacker to cure at least 24 hours before exposure to water—2-3 days may be required for areas with high humidity and/or low temperatures. Protect Stacker with a plastic sheet if rain or heavy dew is probable within 2-3 days.

#### Tooling

##### (if used as an exterior sealant)

Masonry-type tooling blades or a damp polyethylene foam brush work well. Be sure Stacker is tooled tight to log surfaces. Stacker should contact between 1/4" and 1/2" of log surfaces. Work the material smooth, keeping a rag handy to pick up the drips. Take special care to tool Stacker into good contact with the upper log.



**Clean-up and Disposal**

Clean excess product off log surfaces with a putty knife and/or a damp rag.

Dispose of Stacker in accordance with local regulations. Do not dispose in drinking water supplies. Water may be used for cleaning hands, surfaces and equipment. Toxic solvents are not required for clean-up.

**Technical Data:**

**Color:**

Tan and Woodtone

**Packaging:**

30 oz. fiber cartridges

**Application Range:**

40°F to 120°F (Surface temperature)

**Service Range:**

-30°F to 250°F

**Paintability:**

Paintable with oil or latex stains and paints after 1 week's cure time.

**Compatibility:**

Will adhere to woods treated with most preservatives, including borates, pentachlorophenol and copper compounds.

**Shelf Life:**

1 year from date on carton

**Specifications:**

Passes ASTM C834-76 and TT-S-001657. Meets FHA requirements for exterior caulking.

**VOC:**

79.8 grams/liter; 0.665 lbs./gallon

**Physical Properties:**

Adhesion (180° Peel)\*:

Wood Type	lbs./linear inch**
Birch	20
Pine	16
Oak	11
Cedar	9

**5-year Limited Warranty**

Sashco Sealants warrants that Stacker, the Elastic Adhesive Sealant for logs, will stretch and compress up to 100% of the original "head allowance" or joint size, when applied in accordance with the Stacker Data Tec (STK 002). Limited to product replacement only.

"Head allowance" refers to the amount of room the sealant is given after the logs are stacked. For this reason, flat-on-flat stacking applications are not recommended unless there is low or no anticipated movement.

**Cure-Through Time:**

2 weeks (1/4" thickness, 70°F, 50% relative humidity)

**Extrusion Rate:**

750 g/min (1/8" orifice at 40 psi)

**Freeze-Thaw Stability:**

Passes 10 cycles (0°F to 70°F) in the package

**Hardness (Shore A):**

32 (21-day cure)

**Slump:**

<1/8" (3/4" vertical channel)

**Solids Wt. %:**

83.8%

**Stain:**

None

**Tack-Free Time:**

Less than 1 hour (70°F, 50% relative humidity)

\*Ultimate adhesive strength attained in 3-6 weeks, depending on bead size, temperature and humidity.

\*\*Adhesion us tested after 28 days room temperature cure. The average of several tests is reported.

The data reported here are believed to be reliable. No warranty is made or implied concerning the accuracy or the results obtained from their use.

